



Bath - Madison

Wall valve clockwise closing 1/2" - Durabronss

Article number: 36 607 361-09

- rosette Ø 55 mm
- head part with cut-to-length spindle and sleeve
- 3x porcelain insert: HOT, COLD and NEUTRAL
- Fittings group as per DIN 4109: 2

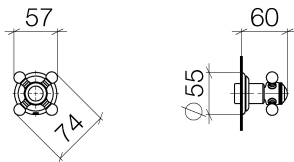


Durabronss

Miscellaneous items are required for this article.

Discontinued articles/items available to order until 31.12.9999

Dimensional drawing



All details in mm / inch = mm x 0.0394



Bath - Madison

Wall valve clockwise closing 1/2" - Durabron

Article number: 36 607 361-09



Bath - Madison

Wall valve clockwise closing 1/2" - Durabron

Article number: 36 607 361-09

Other finish variants



polished chrome
36 607 361-00



platinum matt
36 607 361-06



platinum
36 607 361-08



brushed Durabron
36 607 361-28



Dark Platinum matt
36 607 361-99

Other finishes on request (x-tra Service)



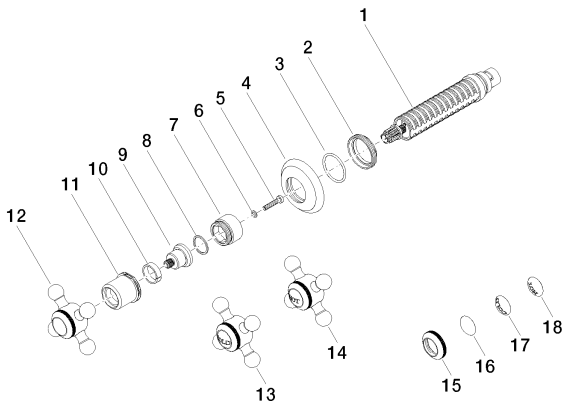
35 607 970 90
Wall valve 1/2" -

Bath - Madison

Wall valve clockwise closing 1/2" - Durabron

Article number: 36 607 361-09

Spare parts list



| No. | Item Number | Name | Quantity used |
|-----|--------------------|-----------------|---------------|
| 1 | 90 90 03 143 00 90 | top | 1 |
| 2 | 09 23 10 125-00 | nut | 1 |
| 3 | 09 14 10 063 90 | seal | 1 |
| 4 | 09 27 36 102-09 | rosette | 1 |
| 5 | 09 30 30 075 90 | screw | 1 |
| 6 | 09 30 11 194 90 | disc | 1 |
| 7 | 09 18 30 007-09 | sleeve | 1 |
| 8 | 09 28 10 030 90 | ring | 1 |
| 9 | 09 12 12 064-09 | base | 1 |
| 10 | 09 14 15 021 90 | ring | 1 |
| 11 | 09 21 02 161-09 | cover | 1 |
| 12 | 04 20 36 100 02-09 | handle | 1 |
| 13 | 04 20 36 100 00-09 | handle (cold) | 1 |
| 14 | 04 20 36 100 01-09 | handle (hot) | 1 |
| 15 | 09 20 36 005-09 | handle | 1 |
| 16 | 09 26 01 016 90 | accessories | 1 |
| 17 | 09 26 01 010 90 | accessories | 1 |
| 18 | 09 26 01 011 90 | accessories | 1 |